



A



B



C



D



E



A. 56-18862
SNOW OWL ORN 5.5"
GLASS

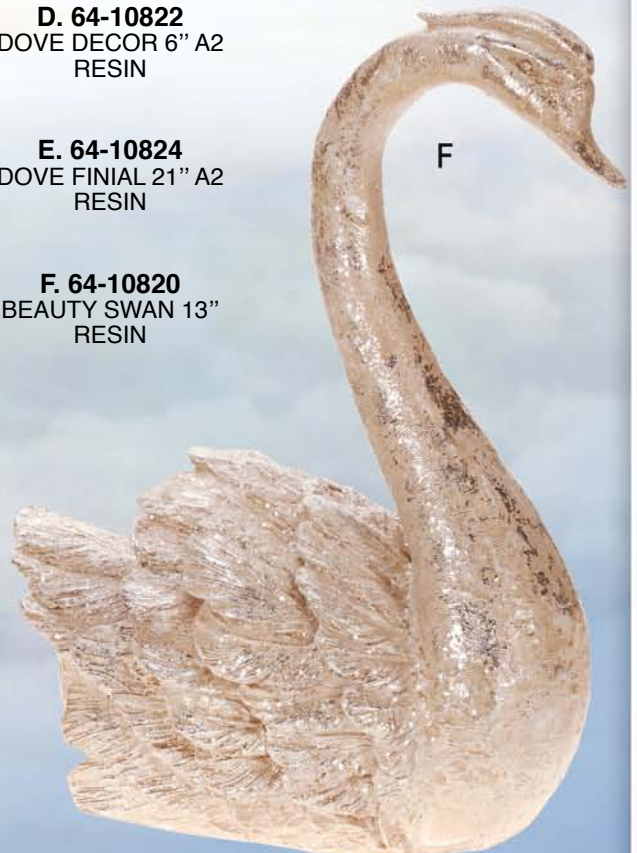
B. 36-13934
ICECPDS BTRFLY ORN 4"A2
PLASTIC/POLYESTER

C. 56-18878
FANCY SNOW BIRD ORN 8"L
GLASS

D. 64-10822
DOVE DECOR 6" A2
RESIN

E. 64-10824
DOVE FINIAL 21" A2
RESIN

F. 64-10820
BEAUTY SWAN 13"
RESIN



F

A



A. 02-16076
FNCY FEATHERDICEBIRD18"L
POLYFOAM/ACRYLIC

B



B. 64-10826
DOVE WITH PEACE 18"
RESIN

C. 02-16078
SNW PRINCESS PEACOCK 37"
POLYFOAM/ACRYLIC

D. 33-14330
SPARKLING DOVE ORN 9"
POLYFOAM/FEATHER

C



D





A. 36-13938
SPIRAL FINIAL ORN 16" A2
TIN

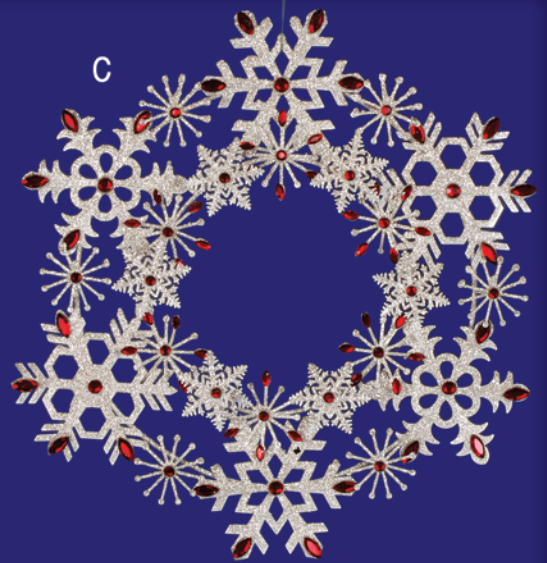
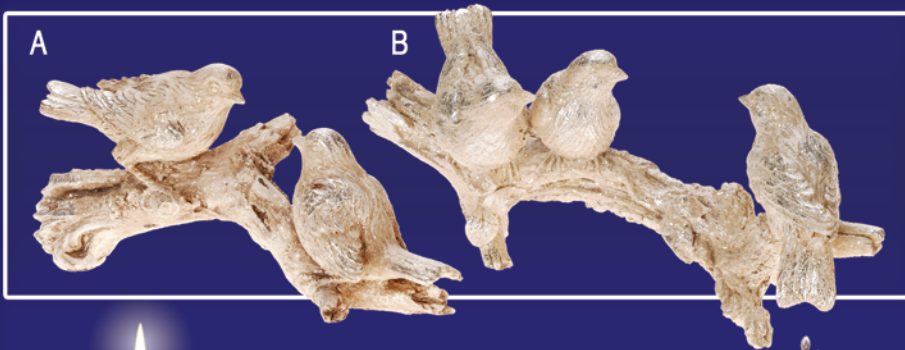
C. 64-10872
SNOWMAN CANISTER 8.5" A3
RESIN/GLASS

E. 64-10954
SNOWFLAKES TREE 15-19" A2
RESIN

B. 33-14390
SPARKLING JEWEL GARLAND 6'
PLASTIC/ACRYLIC

D. 64-10850
SANTA STCKHLDR 9" A2
RESIN

F. 64-00840
SANTA FINIALS 12.5-14" A2
RESIN/GLASS



A. 64-10816
BIRD ON BRANCH X2 9"L
RESIN

B. 64-10818
BIRD ON BRANCH X3 11"L
RESIN

C. 56-18992
SNOWFLAKE WREATH 12"
PLASTIC

D. 64-10896-SLV
NUTCRACKER C/H 10-13"A2
RESIN

E. 56-18998
SNOWFLAKE TREE TBPC 17"
PLASTIC

F. 56-18994
JEWELLED SNOWFLAKE TBPC14"
PLASTIC

G. 64-00914
SILVERCROWN STKHLDR10"A4
RESIN

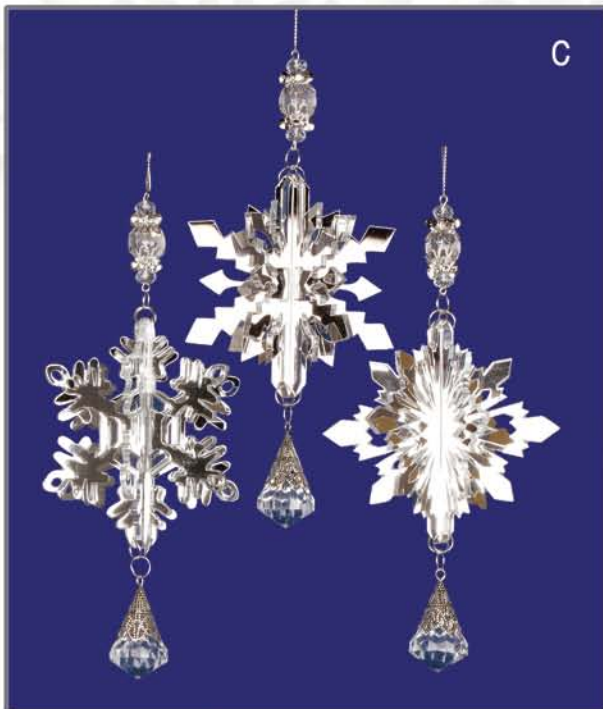
H. 64-10894-SLV
NUTCRACKER C/H 6.5" A3
RESIN



A



B



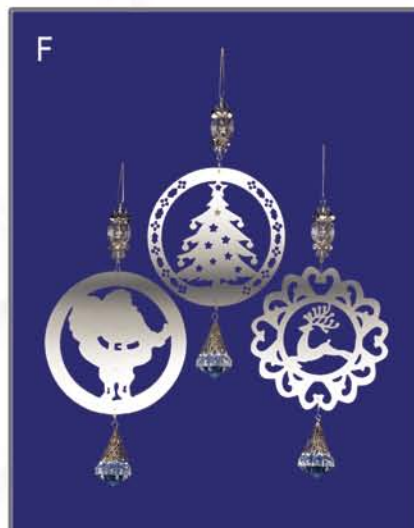
C



D



E



F

A. 30-14526
3-D XMAS TIME ORN4-6"A4
PLASTIC

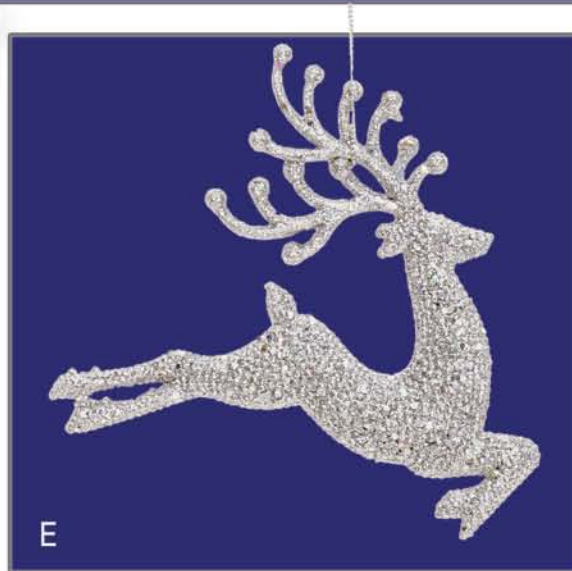
B. 30-14520
ASSORTED XMAS ORN 4" A4
PLASTIC

C. 30-14528
3-D SNOWFLAKES ORN6.5"A3
PLASTIC

D. 30-14530
CHANDELIER ORN,SM 4"
PLASTIC

E. 30-14532
CHANDELIER ORN,LG 9"
PLASTIC

F. 30-14522
CHRISTMASORNW/BEADS6"A3
PLASTIC



A. 30-14536-SLV
SPARKLE TREE ORN 7"
PLASTIC

D. 56-18970
PEARL KEY ORN 6"
PLASTIC

B. 30-14546-SLV
JEWELLED MAGI ORN 4-5" A3
STYROFOAM

E. 30-14534-SLV
FLYING DEER ORN 5"
PLASTIC

C. 56-18986
CRYSTAL BEADS ORN 10"
PLASTIC

A. 56-18978
JEWELED ORN 7"A2
PLASTIC

B. 50-12710
PEARL/GOLDBEADSSPRAY 19"
PLASTIC

C. 50-12712
PEARL/GOLDBEADSSPRAY 34"
PLASTIC

D. 78-10342
GOLDEN BEAD GARLAND 6'
GLASS

E. 34-10599-GLD
GLASS BEAD GARLAND 59"
GLASS

F. 58-11216
GLITTERD BALL GARLAND56"
STYROFOAM





A. 56-18982
DIAMOND DROP ORN 8"A2
PLASTIC

B. 36-13924
FESTIVE DANGLE ORN 6-7"A2
GLASS

C. 56-18984
CRYSTAL DROP ORN 7-8"A2
PLASTIC

D. 36-13922
FROSTED DANGLE ORN 7.5"A2
GLASS

E. 56-18974
JEWEL DROP ORN 6.5"
PLASTIC

F. 56-18976
BEADED JEWEL ORN 5"A2
PLASTIC



A

A. 78-10290
ICE CAPEDES FINIAL ORN 8"
GLASS



B

B. 78-10298
ICE CAPEDES FINIAL ORN 6.5"
GLASS



C



D



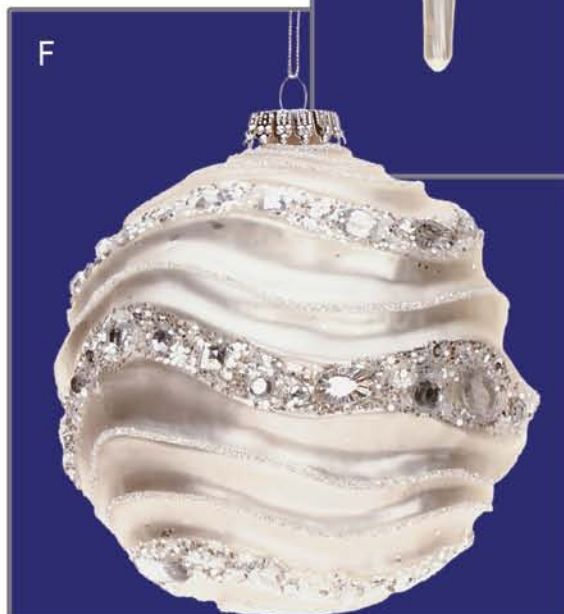
E

C. 36-13920
ICE CAPEDES ORN 6"
GLASS

D. 78-10300
FROSTED FINIAL ORN 10.5"
GLASS

E. 34-10598
GLASS ICE SKATE 4"
GLASS

F. 78-10296
ICE CAPEDES BALL ORN 4"
GLASS



F

A



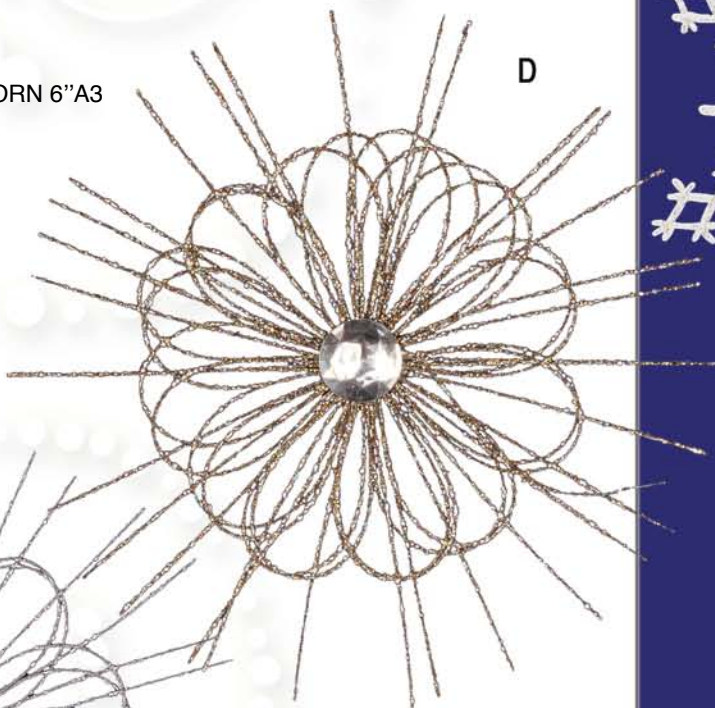
A. 80-17008
ICE CAPADES ORN3" BOXOF4
GLASS

B



B. 36-13926
SNOWFLAKES DROP ORN 6"A3
GLASS

D

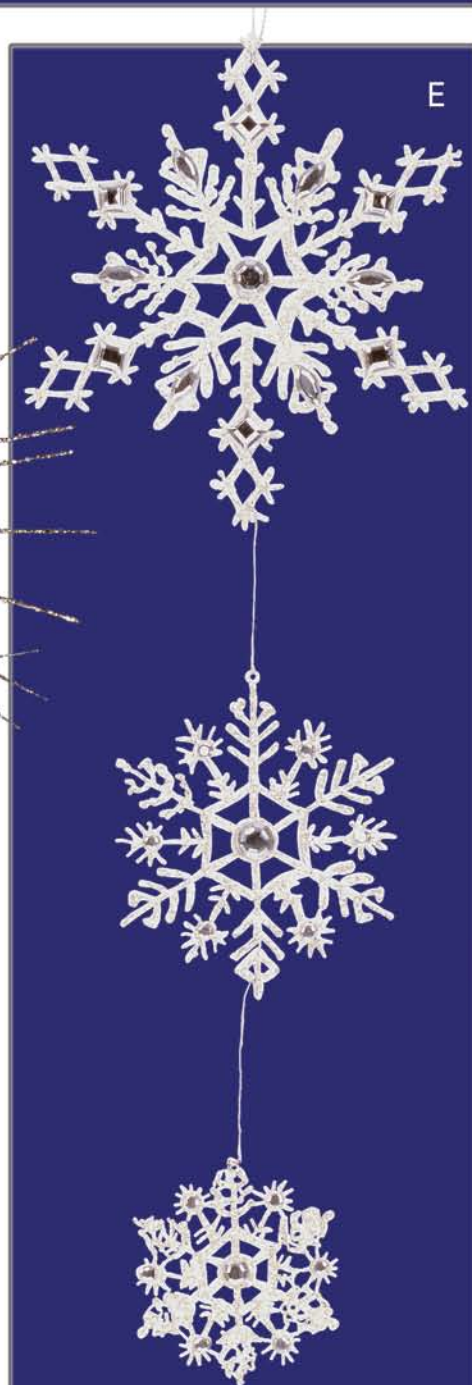


C. 79-10052-WHT
SPRKLNG STRBRSTORN,SM17"
PLASTIC/ACRYLIC

D. 79-10052-PLA
SPRKLNG STRBRSTORN,SM17"
PLASTIC/ACRYLIC

E. 36-13930
TRIPLE SNOWFLAKES ORN16"
PLASTIC

E





A

A. 78-10294
FROSTDSPARKLEBIRDORN4"A2
GLASS

B. 32-04940-GLD
JWLD FLWR/BERRY SPRY 32"
ACRYLIC

C. 32-04926-SLV
JWELED FLWR SPRY X3 25"
ACRYLIC

D. 32-04922-SLV
JWELED FLR/BERRYSPLY31"
ACRYLIC



B



C



D

4" Actual Size

78-10330
12 DAYS XMAS ORN 4"A12
GLASS

TWELVE
Days of Christmas
ORNAMENTS

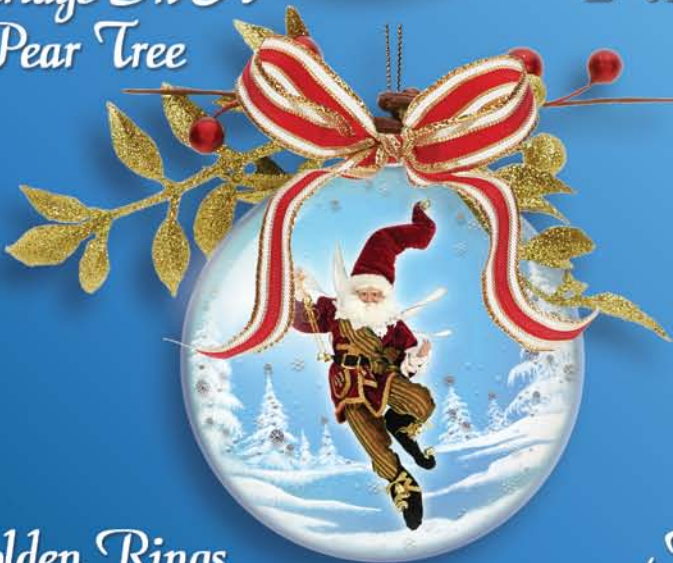




*Partridge In A
Pear Tree*



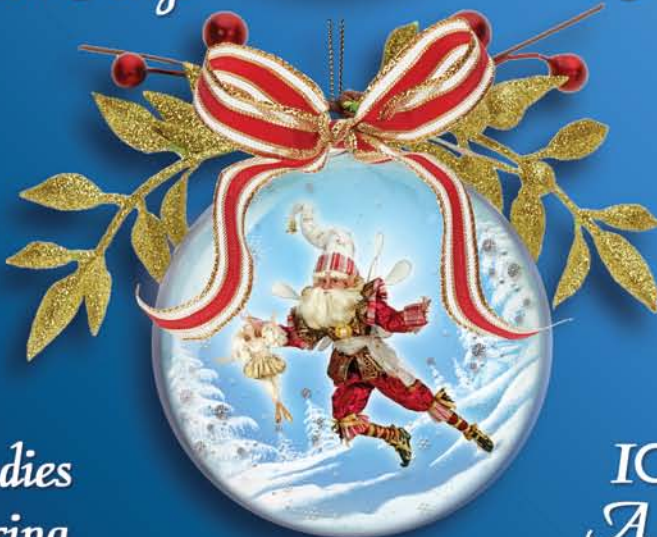
2 Turtle Doves



5 Golden Rings



*6 Geese
A Laying*



*9 Ladies
Dancing*

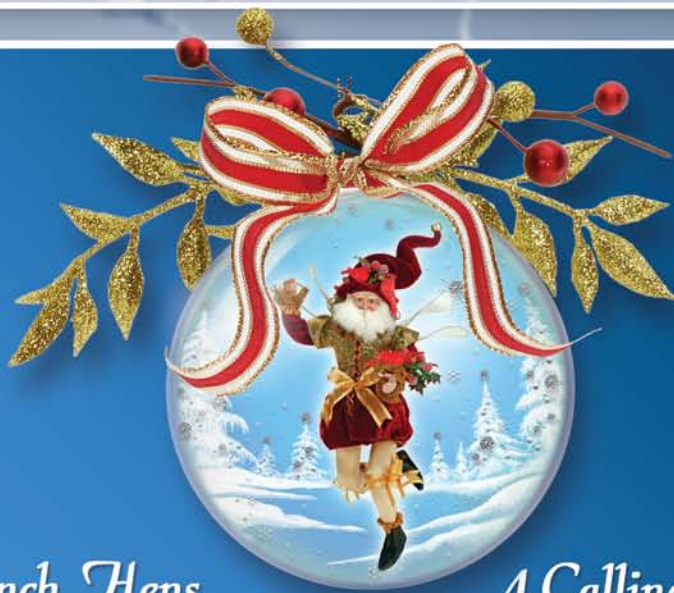


*10 Lords
A Leaping*

12 Days of Christmas Ornaments



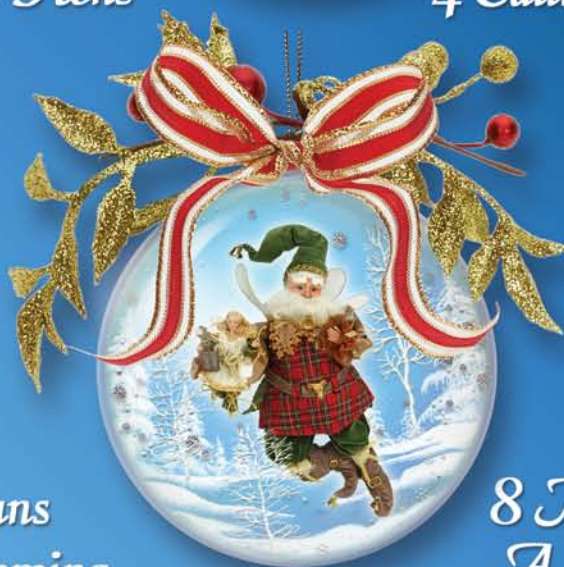
3 French Hens



4 Calling Birds



*7 Swans
A Swimming*



*8 Maids
A Milking*



*11 Pipers
Piping*



*12 Drummers
Drumming*

78-10330
12 DAYS XMAS ORN 4"A12
GLASS

***Sold as a box of 12**